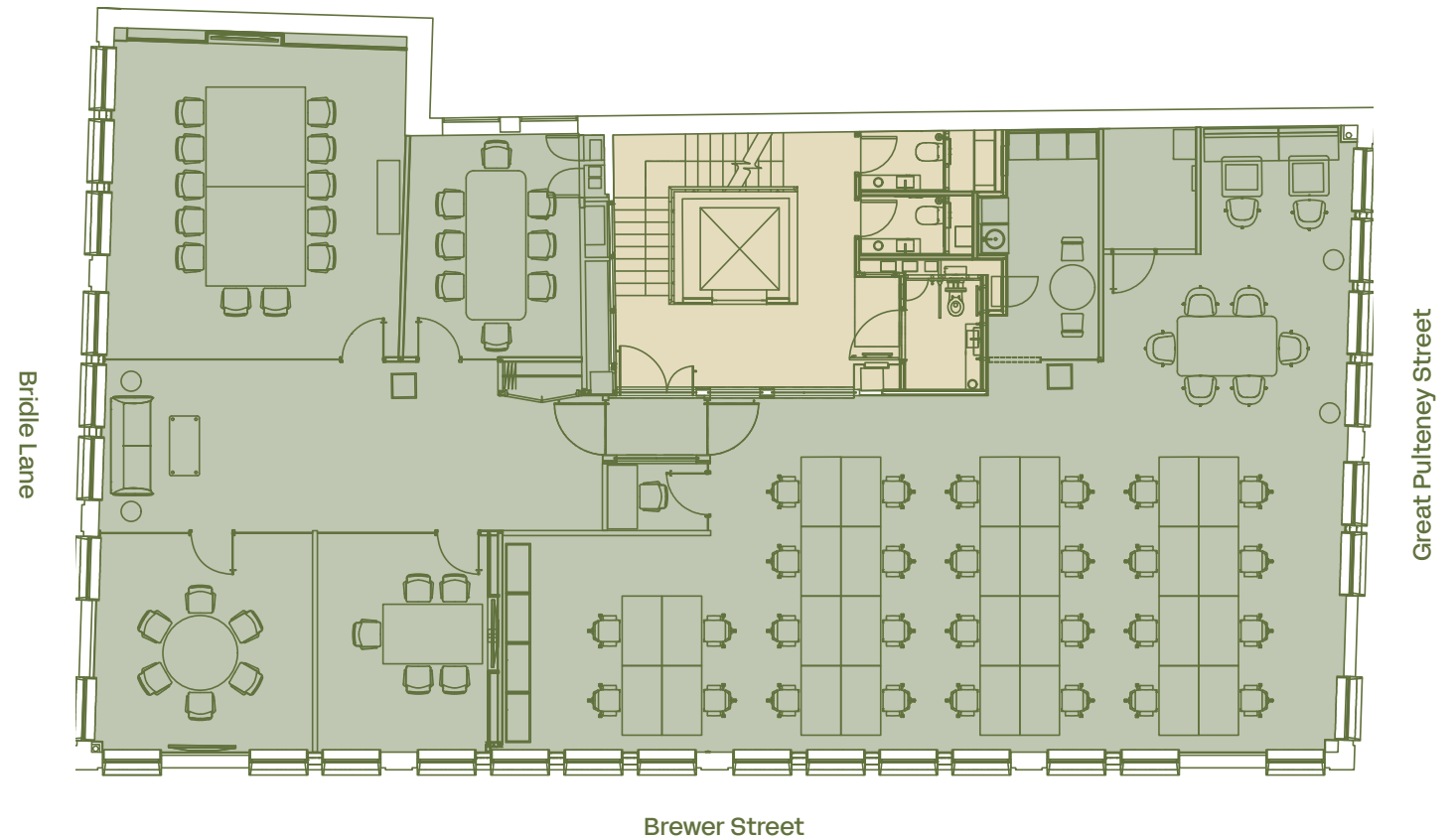


41 Great Pulteney Street *Soho*

2nd Floor

3,023 sq ft /
281 sq m

- 28 open plan workstations
- Agile work area
- Collaboration area
- Quiet room
- 12 person boardroom
- 3x meeting rooms
- Shower in common parts
- Kitchenette
- Fibre enabled



North



For indicative purposes only. Not to scale.