



Great Pulteney Street *Soho*

---

30  
Great  
Pulteney  
Street  
*Soho*

---

2,900 Sq Ft To Let

# Space for you

Great Pulteney Street Soho's portfolio includes properties on both Great Pulteney Street and Lexington Street.

The fifth floor at 30 Great Pulteney Street is fully fitted and refurbished providing 2,900 sq ft of open plan office space.



Fully fitted  
fifth floor office



Prime Soho  
location



Specification

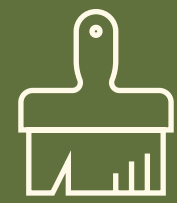
# Space to inspire

Crafted to provide boutique space, with a contemporary style and premium finishes.

Complete with open plan desks, meeting rooms, and collaborative breakout spaces, ready for your business to get straight to work.



## Specification



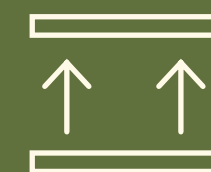
Newly refurbished



Comprehensive refurbishment of reception area



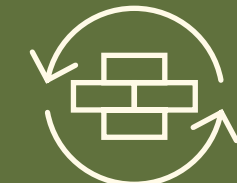
Communal end of trip facilities: bike storage and 2 showers



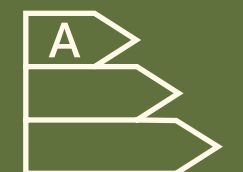
Full access raised floor



Low embodied carbon fit-out



Repurposed site materials



EPC rating A



The Space

# Fifth floor

2,900 sq ft / 269 sq m



30 Great Pulteney Street *Soho*

 36 open plan workstations

 2 person quiet room

 10 person boardroom

 2 x 4 person meeting rooms

 2 x breakout booths

 Reception

 Kitchenette and breakout area

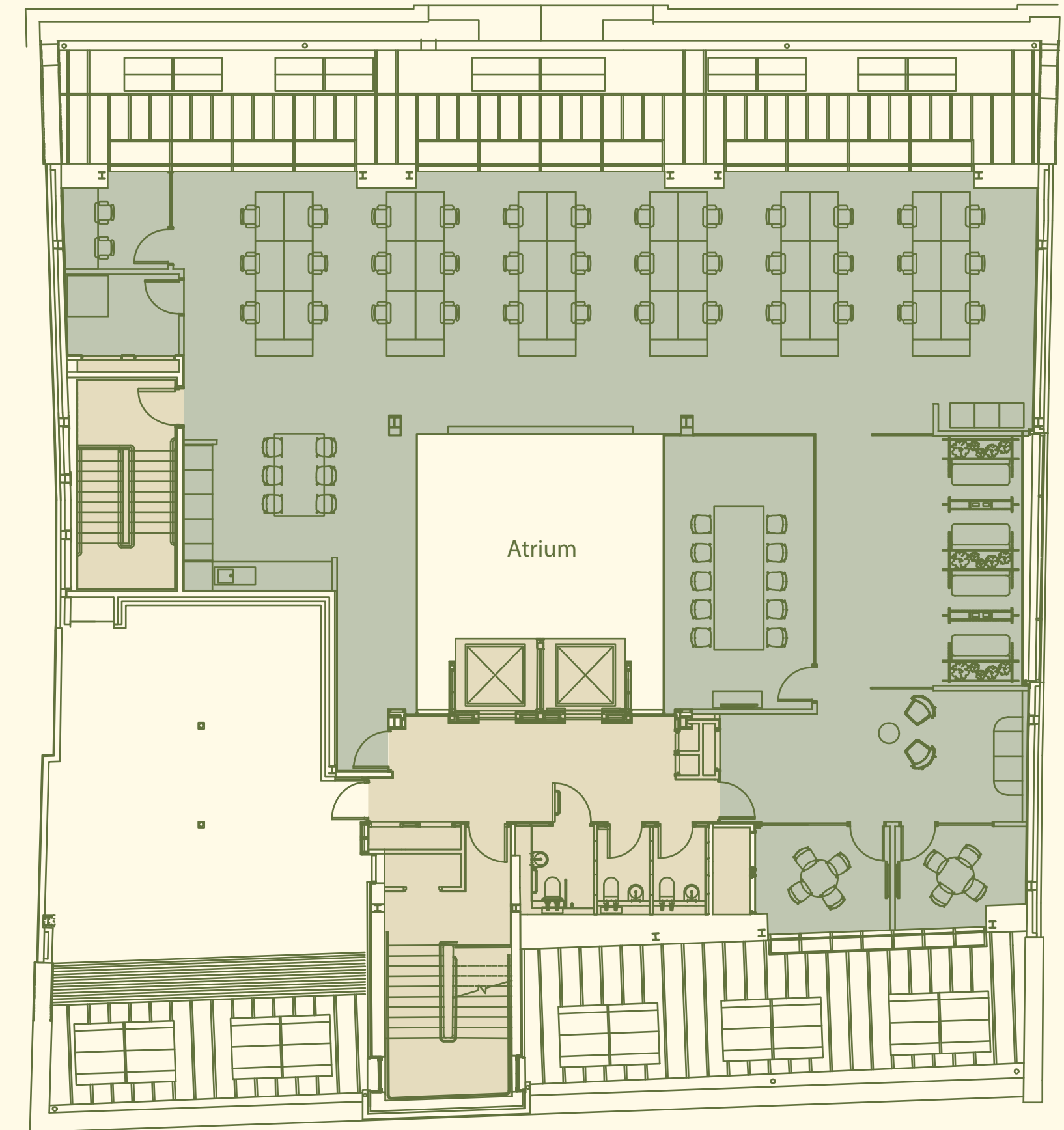
● Office ● Core

North



For indicative purposes only. Not to scale.

Great Pulteney Street




Bridle Lane


Location

# Vibrant Soho

Unrivalled connections, with Piccadilly Circus, Oxford Circus and Tottenham Court Road stations all nearby.

Soho has long been associated with creatives, forward thinking businesses and trend setting retailers. Its social scene is a constantly evolving mix of bars, restaurants and social spaces.

05   
Piccadilly  
Circus



07   
Tottenham  
Court Road



08   
Oxford  
Circus




## Food and Drink

- 01 Mele & Pere
- 02 Kiln
- 03 Yolk
- 04 Mountain
- 05 Kingly Court
- 06 Sun & 13 Cantons
- 07 The Devonshire
- 08 Barrafina
- 09 Grind
- 10 The Ivy Soho

## Retail

- 01 Maharishi
- 02 Rag & Bone
- 03 A.P.C.
- 04 Aries
- 05 Sweaty Betty
- 06 Liberty
- 07 COS
- 08 Ganni
- 09 Flannels
- 10 Apple

## Hotels & Gyms

- 01 Third Space
- 02 Barry's
- 03 More Yoga
- 04 Ham Yard Hotel
- 05 Dean Street Townhouse
- 06 The Soho Hotel
- 07 Broadwick
- 08 The Resident
- 09 F45
- 10 Fitness Lab



# The definitive destination of office and retail spaces in the heart of Soho

# Get in touch

## Terms

Upon application.

## Viewings

Strictly through the sole letting agents.

### William Foster

07748 985 951

[william.foster@knightfrank.com](mailto:william.foster@knightfrank.com)

### Oliver Watkins

07976 577 325

[oliver.watkins@knightfrank.com](mailto:oliver.watkins@knightfrank.com)

### Lydia Carter

07929 668 005

[lydia.carter@knightfrank.com](mailto:lydia.carter@knightfrank.com)



[greatpulteneystreetsoho.co.uk](http://greatpulteneystreetsoho.co.uk)

Misrepresentation Act These particulars are prepared for the guidance only of prospective owners, tenants and occupants. They are intended to give a fair overall description of the property but are not intended to constitute part of an offer or contract. Any information contained herein (whether in the text, plans or photographs) is given in good faith and should not be relied upon as being a statement or representation of fact. Nothing in these particulars shall be deemed to be a statement that the property is in good working condition or otherwise nor that any services or facilities are in good working order. Any areas, measurements or distances referred to herein are approximate only. Descriptions of a property are inevitably subjective and the descriptions contained herein are used in good faith as an opinion and not by way of statement or fact. Neither developer nor any of its employees have any authority to make or give any warranty whatever in relation to this property. January 2025.

Designed and produced by [Cre8te](http://cre8te.london) - 020 3468 5760 - [cre8te.london](http://cre8te.london)