

30 Great Pulteney Street *Soho*

5th Floor

2,900 Sq Ft /
269 Sq M

- 36 x open plan workstations
- 1 x 2 person quiet room
- 1 x 10 person boardroom
- 2 x 4 person meeting room
- 2 x breakout booths
- 1 x reception
- 1 x kitchenette / breakout area

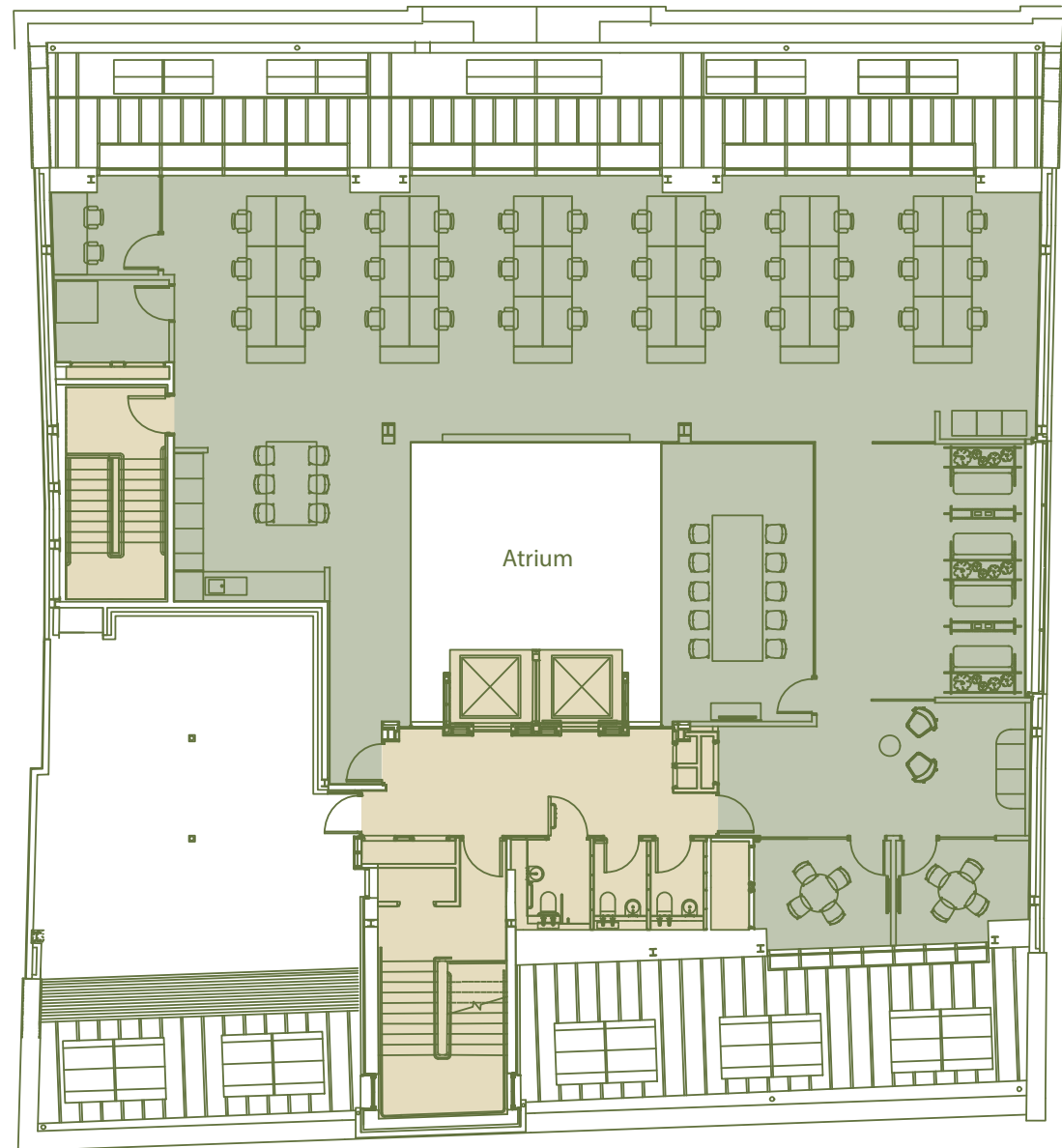
● Office ● Core

North



For indicative purposes only. Not to scale.

Great Pulteney Street



Bridle Lane